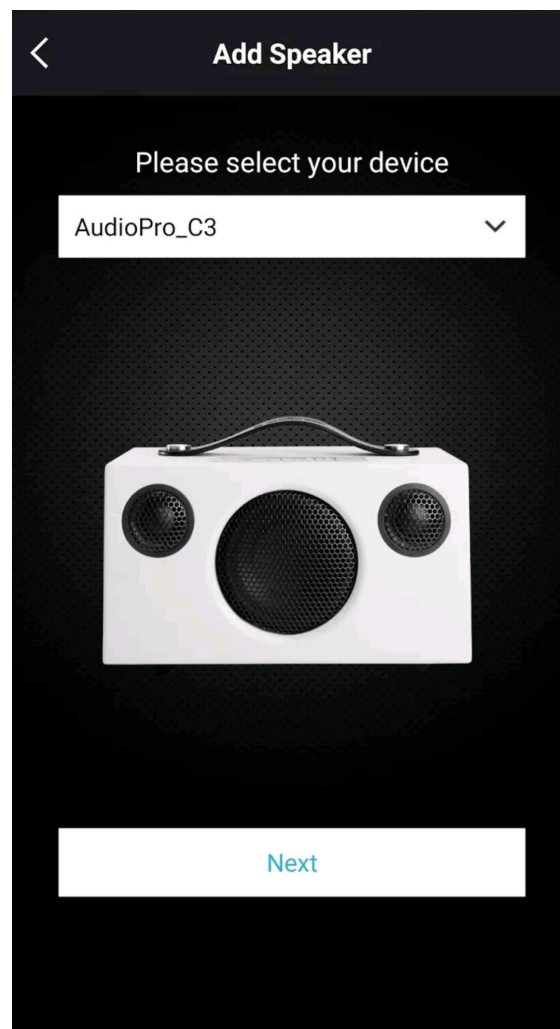


App update 2021-03-15

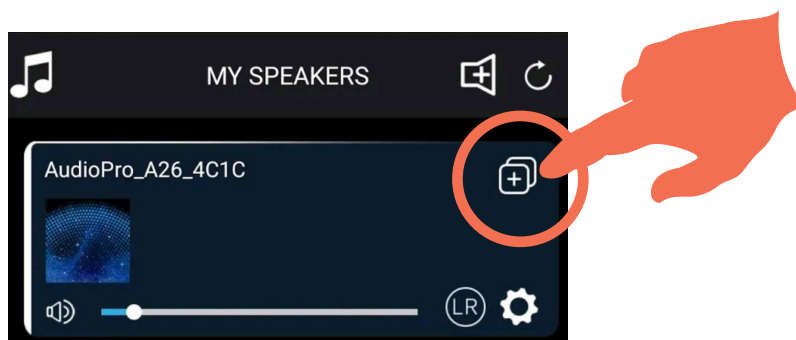
1. New visuals when adding new speaker.
2. New grouping feature.
3. New group volume feature.

1. New visuals when adding new speaker.

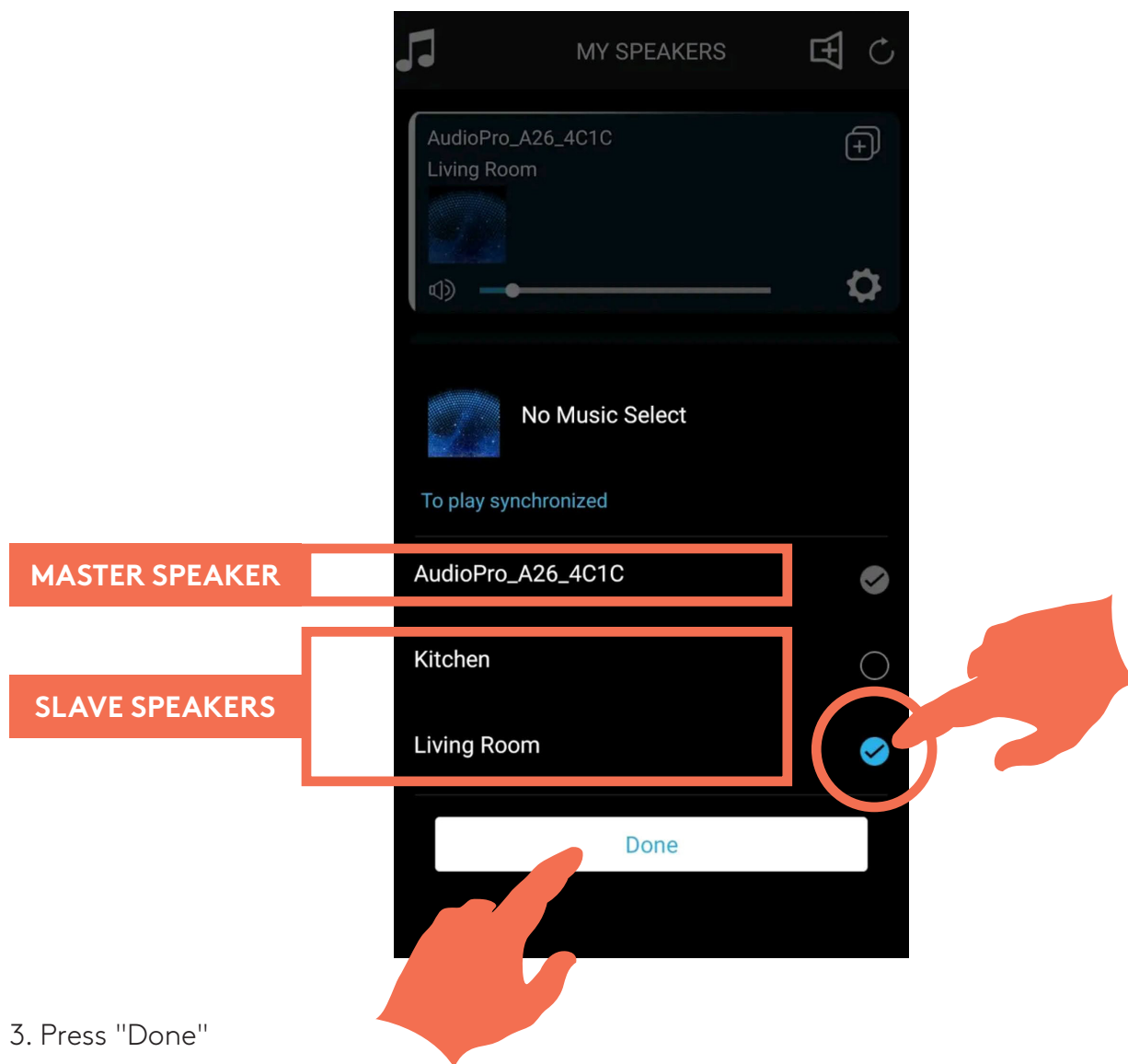


2. New grouping feature.

1. Press the new speaker group icon.



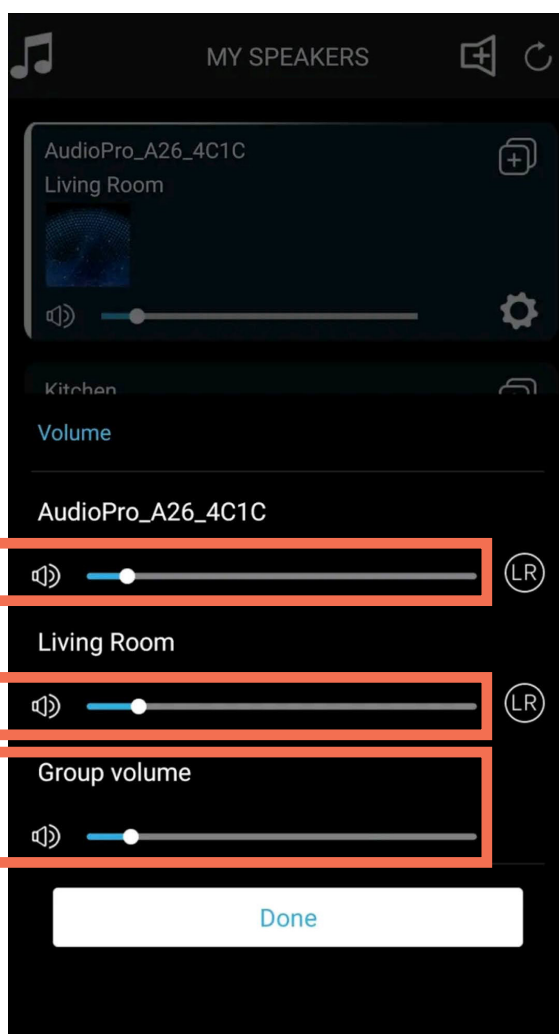
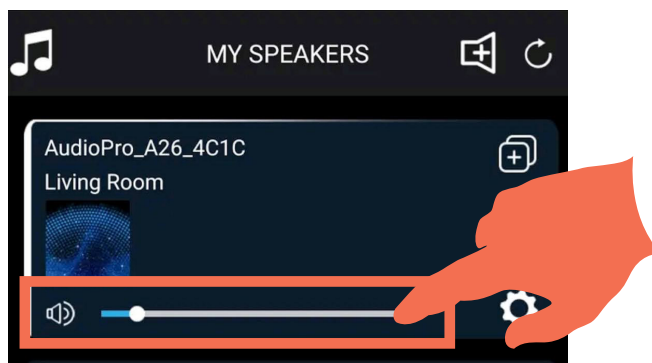
2. Choose the speakers you want to add to your speaker group.



3. Press "Done"

3. New group volume feature.

Press the volume control to open up the group volume.



SINGLE SPEAKER VOLUME  (LR)

SINGLE SPEAKER VOLUME  (LR)

SPEAKER GROUP VOLUME 