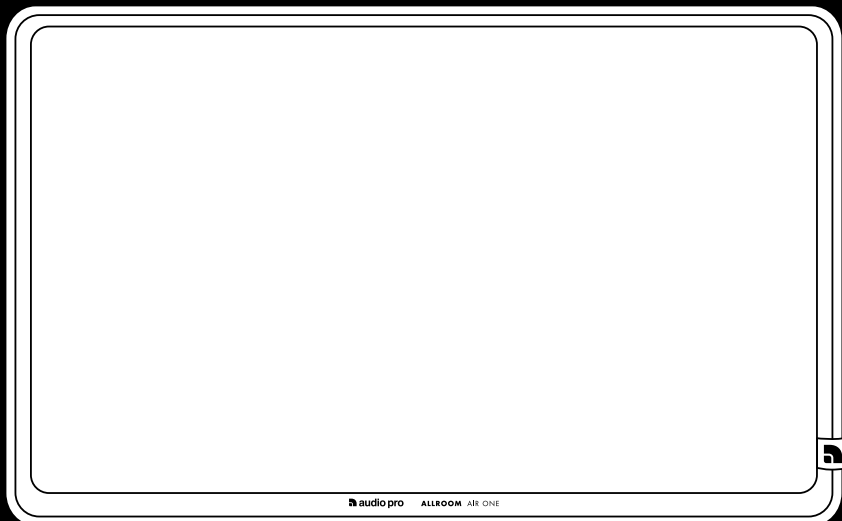
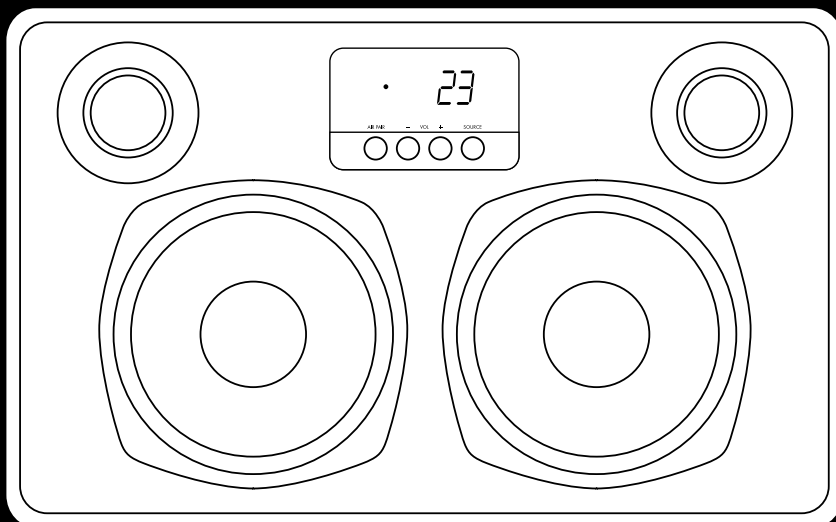


# ALLROOM AIR ONE



**EN** - OWNERS MANUAL  
**SE** - BRUKSANVISNING  
**FR** - MANUEL D'UTILISATION  
**DE** - BEDIENUNGSANLEITUNG  
**ES** - MANUAL DEL PROPIETARIO  
**FI** - KÄYTTÖOPAS  
**NL** - GEBRUIKERSHANDLEIDING



 **audio pro**

SOUND OF SCANDINAVIA

# audio pro

## SOUND OF SCANDINAVIA

### WELCOME TO AUDIO PRO AND ALLROOM AIR ONE SPEAKER

Thank you for choosing Swedish Audio Pro. We have delivered innovative audio products since 1978, with strong focus on good music experiences in your home. Allroom Air One is more than just a wireless network speaker. It's combined audio and acoustical knowledge in one versatile speaker. Enjoy Allroom Air One!

[www.audiopro.com](http://www.audiopro.com) | [www.audiopro.se](http://www.audiopro.se)  
[www.facebook.com/audiopro](https://www.facebook.com/audiopro)

© Audio Pro AB Sverige  
Audio Pro®, Audio Pro logotypen, 'a' symbolen, och ace-bass® är registrerade varumärken av Audio Pro AB, Sverige.  
Alla rättigheter reserverade. Audio Pro följer en policy om ständig produktutveckling. Specifikationer kan ändras utan föregående meddelande.

© Audio Pro AB Sweden  
Audio Pro®, the Audio Pro logotype, the 'a' symbol, and ace-bass® are all registered trademarks of Audio Pro AB, Sweden.  
All rights reserved. Audio Pro follows a policy of continuous advancement in development. Specifications may be changed without notice.

AirPlay, the AirPlay logo, iPhone, iPod, iPod classic, iPod nano, iPod shuffle, iPod touch, iPad and Safari are trademarks of Apple Inc., registered in the U.S. and other countries.

Firefox is a registered trademark of the Mozilla Foundation.

Internet Explorer is a registered trademark of Microsoft Corporation in the United States and other countries.

Chrome is a registered trademark of Google Inc.

Airfoil is a registered trademark of Rogue Amoeba Software LLC.

FCC and Canada compliance information:

#### WIRELESS LOUDSPEAKER ALLROOM AIR ONE

FCC ID: XCO-AIRONE  
and IC: 7756A-AIRONE

This equipment has been tested and found to comply with the limits for a Class B digital device, pursuant to part 15 of the FCC Rules. These limits are designed to provide reasonable protection against harmful interference in a residential installation. This equipment generates uses and can radiate radio frequency energy and, if not installed and used in accordance with the instructions, may cause harmful interference to radio communications. However, there is no guarantee that interference will not occur in a particular installation. If this equipment does cause harmful interference to radio or television reception, which can be determined by turning the equipment off and on, the user is encouraged to try to correct the interference by one or more of the following measures:

- Reorient or relocate the receiving antenna.
- Increase the separation between the equipment and receiver.
- Connect the equipment into an outlet on a circuit different from that to which the receiver is connected.
- Consult the dealer or an experienced radio/TV technician for help.

To satisfy FCC RF exposure requirements, a separation distance of 20 cm or more should be maintained between this device and persons during device operation. To ensure compliance, operations at closer than this distance is not recommended. The antenna used for this transmitter must not be co-located in conjunction with any other antenna or transmitter.

This device complies with Part 15 of the FCC Rules. Operation is subject to the following two conditions: (1) this device may not cause harmful interference, and (2) this device must accept any interference received, including interference that may cause undesired operation.

Pour satisfaire aux exigences de la FCC d'exposition aux radiofréquences, une distance de séparation de 20 cm ou plus doit être maintenue entre cet appareil et des personnes lors de fonctionnement du dispositif. Pour assurer la conformité des opérations au plus près que cette distance n'est pas recommandée. L'antenne utilisée pour ce transmetteur ne doit pas être co-localisée en conjonction avec toute autre antenne ou transmetteur.

Cet appareil est conforme à la Partie 15 des règlements de la FCC. L'opération est soumise aux deux conditions suivantes: (1) cet appareil ne peut causer d'interférences nuisibles, et (2) cet appareil doit accepter toute interférence reçue, y compris les interférences qui peuvent provoquer un fonctionnement indésirable.

*Under Industry Canada regulations, this radio transmitter may only operate using an antenna of a type and maximum (or lesser) gain approved for the transmitter by Industry Canada. To reduce potential radio interference to other users, the antenna type and its gain should be so chosen that the equivalent isotropically radiated power (e.i.r.p.) is not more than that necessary for successful communication.*

*Conformément à la réglementation d'Industrie Canada, le présent émetteur radio peut fonctionner avec une antenne d'un type et d'un gain maximal (ou inférieur) approuvé pour l'émetteur par Industrie Canada. Dans le but de réduire les risques de brouillage radioélectrique à l'intention des autres utilisateurs, il faut choisir le type d'antenne et son gain de sorte que la puissance isotrope rayonnée équivalente (p.i.r.e.) ne dépasse pas l'intensité nécessaire à l'établissement d'une communication satisfaisante.*

# ENGLISH

## SPECIFICATIONS

Type: Powered Airplay® loudspeaker system with DSP, 2-way bass reflex

Amplifier: 160W (4 x 40W) digital Class D amplifiers

Tweeter: 2 x 1" silk dome

Woofer: 2 x 4.5"

Frequency range: 45 – 22.000Hz

Crossover frequency: 2500Hz (24dB/octave)

Dimensions HxWxD: 195x310x185 mm

Inputs: Airplay, 3.5 mm stereo, USB, optical TOS-Link

Output: Subwoofer out

## IN THE CARTON

1 x Allroom Air One speaker

1 x Remote control

1 x Table stand

1 x User manual

1 x Power cord

## SYSTEM REQUIREMENTS

iTunes 10.1 or later to operate from a MAC or PC.

Airplay can also operate from an iOS device capable of running iOS 4.2 or later (iPhone 3G, 3GS or 4, iPod touch 2nd, 3rd or 4th gen, iPad/iPad 2/iPad 3).



The lightning flash with arrowhead symbol, within an equilateral triangle, is intended to alert the user to the presence of uninsulated "dangerous voltage" within the product's enclosure that may be of sufficient magnitude to constitute a risk of electric shock to persons.



The exclamation point within an equilateral triangle is intended to alert the user to the presence of important operating and maintenance (servicing) instructions in the literature accompanying the appliance.



**WARNING**  
Risk of electric shock  
Do not open

**AVIS**  
Risque de choc électrique  
Ne pas ouvrir



### WARNING:

TO REDUCE THE RISK OF FIRE OR ELECTRIC SHOCK, DO NOT EXPOSE THIS APPARATUS TO RAIN OR MOISTURE.

### CAUTION:

TO REDUCE THE RISK OF ELECTRIC SHOCK, DO NOT REMOVE COVER (OR BACK). NO USER-SERVICEABLE PARTS INSIDE. REFER SERVICING TO QUALIFIED SERVICE PERSONNEL.

## IMPORTANT SAFETY INSTRUCTIONS

1. Read these instructions.
2. Keep these instructions.
3. Heed all warnings.
4. Follow all instructions.
5. Do not use this apparatus near water.
6. Clean only with dry cloth.
7. Do not block any ventilation openings. Install in accordance with the manufacturer's instructions.
8. Do not install near any heat sources such as radiators, heat registers, stoves, or other apparatus (including amplifiers) that produce heat.
9. Protect the power cord from being walked on or pinched particularly at plugs, convenience receptacles, and the point where they exit from the apparatus.
10. Only use attachments/accessories specified by the manufacturer.
11. Unplug this apparatus during lightning storms or when unused for long periods of time.
12. Refer all servicing to qualified service personnel. Servicing is required when the apparatus has been damaged in any way, such as power-supply cord or plug is damaged, liquid has been spilled or objects have fallen into the apparatus, the apparatus has been exposed to rain or moisture, does not operate normally, or has been dropped.

### 13. Damage Requiring Service

Unplug the apparatus from the wall outlet and refer servicing to qualified service personnel under the following conditions:

- A. When the power-supply cord or plug is damaged,
- B. If liquid has been spilled, or objects have fallen into the apparatus,
- C. If the apparatus has been exposed to rain or water,
- D. If the apparatus does not operate normally by following the operating instructions. Adjust only those controls that are covered by the operating instructions as an improper adjustment of other controls may result in damage and will often require extensive work by a qualified technician to restore the apparatus to its normal operation,
- E. If the apparatus has been dropped or damaged in any way, and
- F. When the apparatus exhibits a distinct change in performance this indicates a need for service.

### 14. Object and Liquid Entry

Never push objects of any kind into the apparatus through openings as they may touch dangerous voltage points or short-out parts that could result in a fire or electric shock. The apparatus shall not be exposed to dripping or splashing and no objects filled with liquids, such as vases shall be placed on the apparatus. Don't put candles or other burning objects on top of this unit.

### 15. Batteries

Always consider the environmental issues and follow local regulations when disposing of batteries.

16. The power supply and power cord for this apparatus is intended for indoor use only.

# ENJOY YOUR ALLROOM AIR ONE

## AIRPLAY

### - PLAY YOUR MUSIC IN YOUR WIRELESS NETWORK

Apple's Airplay technology allows you to stream your music wirelessly from your Mac or PC to Allroom Air One. You can even stream high quality audio directly from your iPhone®, iPad® or iPod Touch®. Cutting the strings with AirPlay gives you freedom to move about as you please with all your music in the palm of your hand.

## PLAY WIRELESSLY FROM ANY IOS DEVICE

Apple's handheld devices has revolutionised our world in terms of having everything in the palm of your hands. With Allroom Air One you can listen to your music while walking around in your home. Simply select a track, and AirPlay lets you play it instantly. And it's not only music, sound from movies and apps also get their part with AirPlay.

## PLAY WIRELESSLY FROM YOUR MAC OR PC

Select and play any track from your entire music collection. In perfect audio quality. Allroom Air One does this and more. AirPlay allows the Allroom Air One to wirelessly connect to any PC or Mac running iTunes. Browse your music there, or use your iPhone, iPad or iPod Touch as the worlds most convenient remote control.

## STREAM AUDIO FROM WEB, APPS AND GAMES

With Allroom Air One it's not just the music that free to roam in your network. Services such as Spotify, Last FM and Pandora allow you to experience your music with Airplay. All that content can be enjoyed wirelessly and enhance your music experience even further. You can even play the sound of YouTube and other movie streaming services. Apps has revolutionized our lives in many ways. Of course AirPlay play a vital part here as well. AirPlay allows not only music to be streamed, you can also send audio from many apps, games and podcasts.

## APPLE LOSSLESS

### - YOUR MUSIC, UNCOMPRESSED IN BEST QUALITY

For wireless audio that sounds as good as wired, Allroom Air One uses Airplay. Airplay streams your music in Apple Lossless format, which means that nothing is missing from the sound that comes out of the Allroom Air One. All details are there, all nuances, and all dynamics. Uncompressed sound and perfect hifi quality without wires.

## MULTIROOM MUSIC

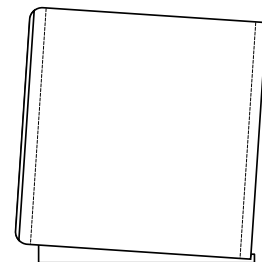
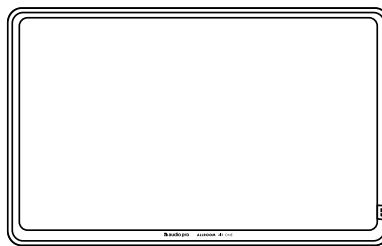
### - YOUR MUSIC, IN YOUR WHOLE HOME

One Allroom Air One is extraordinary. But add more for a simple and user friendly multiroom system. With minimum of fuss. You can select which speaker to play at any time or using more speakers at the same time using your computer and iTunes. Fill every room with dynamic high quality sound.

## DLNA ENABLED

### - USE ANDROID DEVICES AND WINDOWS PLAY TO

Supports locally stored content with DLNA functionality. Use your Android phone/tablet, Windows Play To and play your music wirelessly in your network. May require third party software.



## PREMIUM HIFI SOUND

Audio Pro have made great sounding speakers since 1978. With strong focus on premium hifi sound. The Allroom Air One is no exception. This small speaker performs amazing dynamics with open and natural sound. So that your music sounds the way it's supposed to sound. Not leaving any details out.

## PREMIUM DESIGN

The Allroom Air One is quality inside and out. A fully active 2.1 speaker design. All four drive units are individually driven by dedicated class D amplifiers of a total of 100W. Premium digital amplifiers, high performing drivers and advanced DSP technology all surrounded in a modern scandinavian design. Covered in a variety of leather with hand stitched threads, the Allroom Air One will blend seamlessly into any home environment.

## CONNECT MORE SOURCES

Allroom Air One is a speaker of many uses. Besides being an excellent wireless speaker, we wanted it to be a versatile and useful speaker in more ways. That's why we equipped Allroom Air One with many connecting options. Connect any source with sound output (such as headphones out) to one of the three inputs. For those demanding listeners we have also added an optical TOS-link input. Connect to sound sources with optical audio output, such as flat TV's, harddisk-players or sat/cable receiver.

## LET YOUR TV SOUND GREAT

Let Allroom Air One help your flat TV to perform excellent audio. Simply connect your TV with optical TOS-link cable and your TV experience will be transformed to sound as good as it looks.

## ADD A POWERED SUBWOOFER FOR EXTRA PUNCH

Adding to the versatility of the Allroom Air One, there is a sub output to connect any powered subwoofer. Subwoofers are one of the hallmarks of Audio Pro, since the company all started in 1978 with an extraordinary powered subwoofer. Connecting a subwoofer will give a deep bass dimension to all your music. Ready to party!

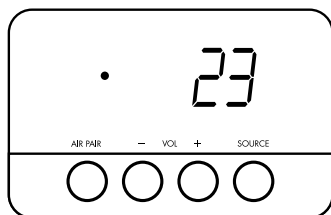
## COMBINE WITH AUDIO PRO WIRELESS NETWORK

Audio Pro have been pioneering wireless speakers with the awarded Living speaker series. The Allroom Air One can be used in combination with our flawless Living speakers wireless system. Just connect a Audio Pro Wireless receiver to Allroom Air One, and you are set to go for a truly premium multiroom hifi experience.



# BASIC OPERATIONS

## CONTROLS ON SPEAKER



### AIR PAIR

- use to setup speaker in network.

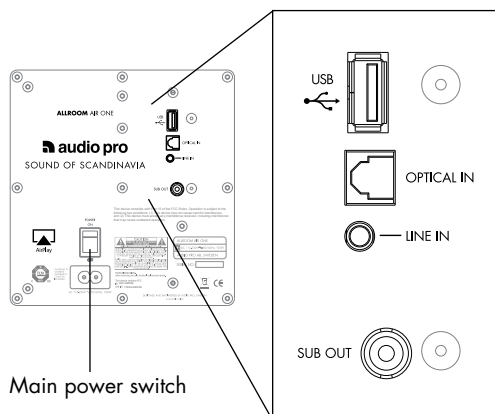
### - VOL +

- adjust volume up or down.

### SOURCE

- toggle between the 4 sources:  
Airplay » USB » Line in » Optical in.

## REAR CONNECTIONS



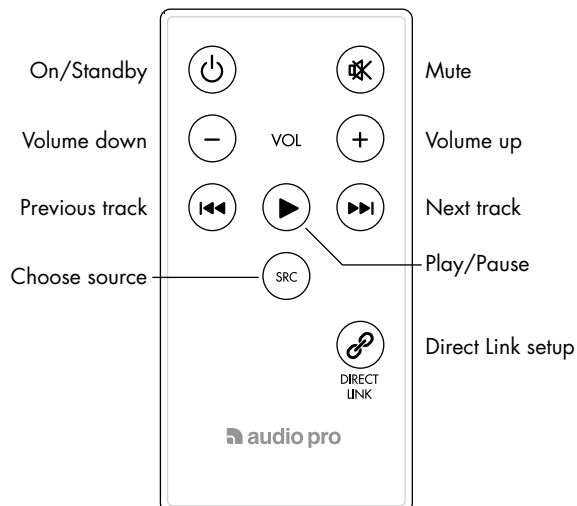
USB - Connect Audio Pro RX100 receiver or iPod.

OPTICAL IN - Connect source with optical output.

LINE IN - Connect source with line output.

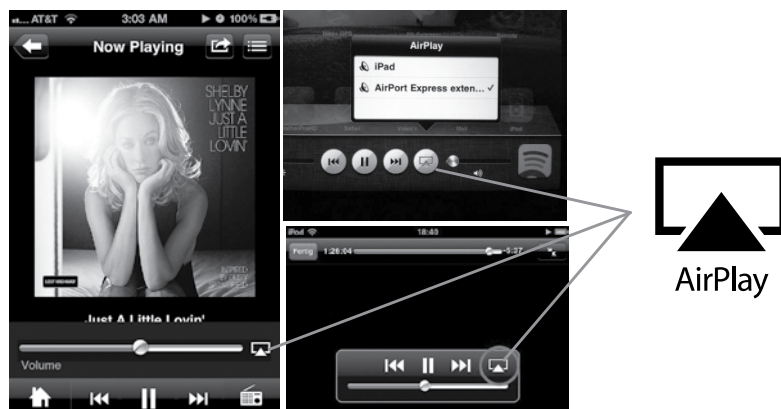
SUB OUT - Connect powered subwoofer.

## REMOTE CONTROL



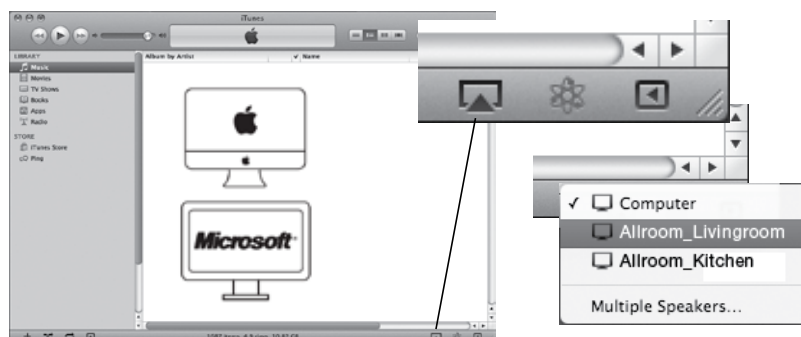
## WIRELESS – PLAYING FROM YOUR IPHONE/IPAD/IPOD TOUCH

Open your music application (Spotify, WIMP, LastFM etc.). Look for the Airplay icon. Choose your Allroom Air One speaker (or what you named the speaker in setup process). Press play, sound will now be heard from your Allroom Air One.



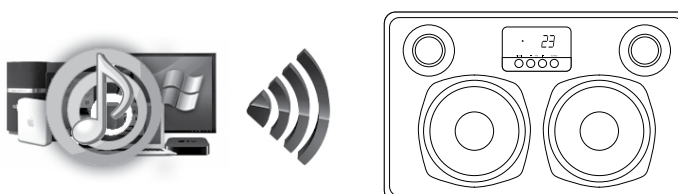
## WIRELESS – PLAYING MUSIC FROM ITUNES ON MAC OR PC

Open iTunes application. Look at bottom right corner for the Airplay icon. Choose your Allroom Air One speaker. Press play, sound will now be heard from your Allroom Air One. If you want audio to be played to several speakers at the same time, press "Multiple speakers..." and choose more Airplay speakers.



## WIRELESS – PLAYING MUSIC WHEN NOT USING ITUNES ON MAC OR PC

Download AirFoil application to play music to Allroom Air One with other music services. The application makes it possible to send music wirelessly from more music services. Google for "Airfoil".



# AIRPLAY WIRELESS SETUP

Before playing music on your Allroom Air One loudspeaker, you need to connect it to a wireless network. There are three easy ways to connect the Allroom Air One to your wireless home network.



## 1. ROUTER WITH WPS BUTTON

Check if your router has a WPS button. Press button and WPS LED will start flashing. Then press the AIR PAIR button on Allroom Air One, LED will flash red-green-blue. If wireless signal is strong enough, Allroom Air One automatically connects to your wireless network, and LED will be solid blue. You are now ready to play your music wirelessly.



## 2. USE YOUR IOS DEVICE WITH THE AUDIO PRO APP

Download the free Audio Pro Airplay setup app from App Store, and follow instructions in the app.

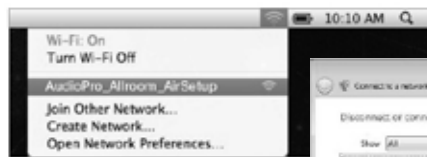
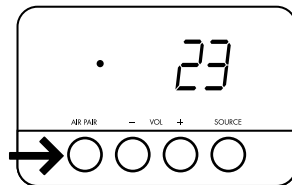
<http://itunes.apple.com/se/app/audiopro/>

## 3. SETUP USING INTERNET BROWSER

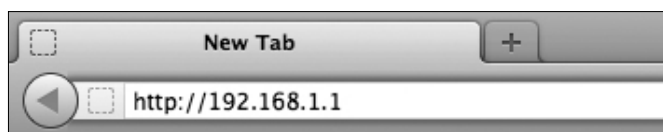
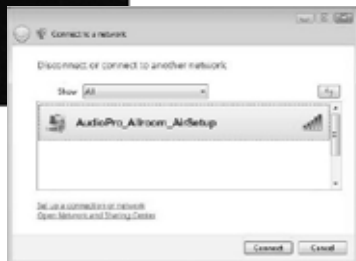
See instructions below.

## WIRELESS SETUP USING INTERNET BROWSER

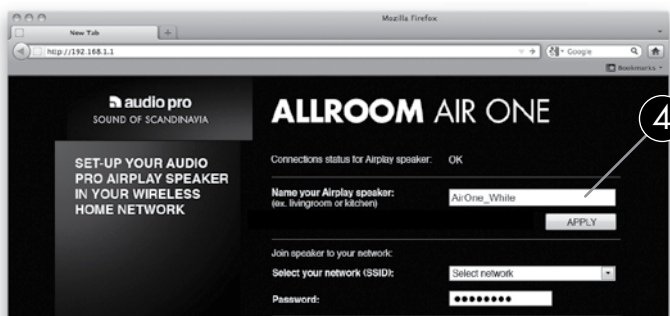
1. Push "AIR PAIR" button on Allroom Air One until LED flashes Blue-Green.



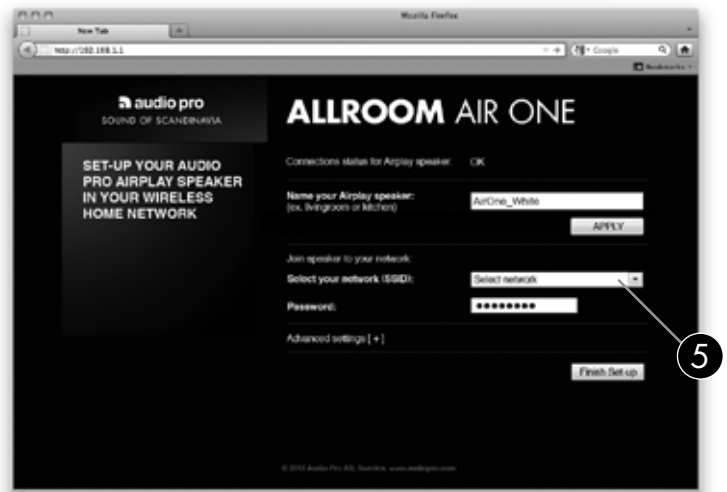
2. Open Wireless Connection utility on your PC or Mac. Choose network: **AudioPro\_AA1\_NET**



3. Open an internet browser (Firefox, Safari, Chrome, Internet Explorer). Type in address: **http://192.168.1.1**



4. Audio Pro Airplay setup page will appear. First, name your speaker (for example, Kitchen, Living-room etc). Press "APPLY" button.



5. Choose your home network (the network to which you want your Allroom Air One to be joined to). If you have password, type in this as well. Then press "FINISH" button.

6. Once you have pressed FINISH button, screen with this text appears:  
*"Warning, incorrect parameters about to change settings."*  
(Wording varies depending on which browser you use.) Just click "OK", and go to step 7.

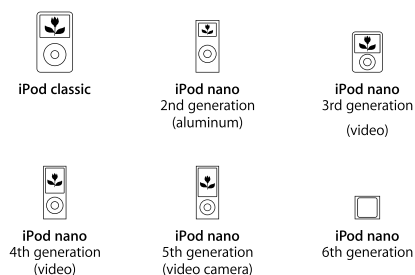
7. DONE! Your Allroom Air One will automatically restart. When the LED on Allroom Air one goes to steady blue light, you are ready to play wireless music!

This procedure will only be needed to be done once. Each time you turn your Allroom Air One on, it will stay connected to your network.

## PLAY MUSIC FROM OTHER SOURCES

### PLAYING AUDIO VIA USB

Connect your iPod or other iOS device via the USB-port and play your music via cable. Supported iPod models:



### AUDIO VIA 3.5MM INPUT

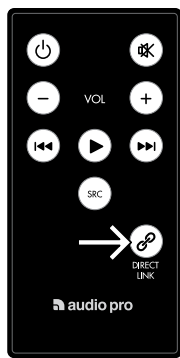
Connect any sound source with line out (headphones output) to the Allroom Air One. For example: MP3-player, CD-player, cellphone.

### AUDIO VIA OPTICAL INPUT

Connect any sound source with optical audio output to the Allroom Air One. For example: TV-set, Apple TV, media player (PCM only.)

## PLAY WIRELESS MUSIC WITH DIRECT LINK

Play stored or offline music wireless without using a wireless router. The Allroom Air One creates its own wireless network in which you can play wireless audio directly to the speaker. DIRECT LINK pairs your device with Allroom Air One.



#### DIRECT LINK Setup:

1. Press the "DIRECT LINK" button on the *remote control*.

The LED will flash Blue-Red for about 6 seconds.

The Allroom Air One will then restart.

The LED will show solid Green for successful Direct Link mode.

2. Connect your Apple iOS device, Mac or PC to the network named

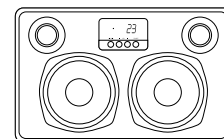
**"AudioPro\_AA1\_DIRECT"** when you scan for available networks.

Now you can play music directly to the speaker without a wireless router.

#### Note:

1. With Direct Link functionality you can play locally stored music and offline playlists.

2. Cancel the Direct Link mode by pressing the DIRECT LINK button on the remote again.



## TIPS

- Before switching to the USB or Aux input stop streaming music via AirPlay.
- Before switching to AirPlay or the Aux input, stop playing music on the USB input.
- When switching between iOS Devices, allow at least 10 seconds to pass before playing the new iOS Device.

## FIRMWARE UPDATE

To learn how to install the latest version of the Allroom Air One's firmware, if one is available, please go to the Allroom Air One product page on [www.audiopro.com](http://www.audiopro.com) or [www.audiopro.se](http://www.audiopro.se)

## TROUBLESHOOTING

### Allroom Air One will not Power On.

- Make sure DC adapter is plugged securely into wall (LED on power supply is Blue) and into the back of the unit.
- Make sure there is power at the outlet Allroom Air One is plugged into.

### Allroom Air One has been setup but will not reconnect to your network.

- Restart your wireless network: unplug your wireless router for at least 30 seconds, then re-plug in.
- Unplug the power from the back of the Allroom Air One for at least 30 seconds, plug into the outlet again and re-setup iOS Device locks up.

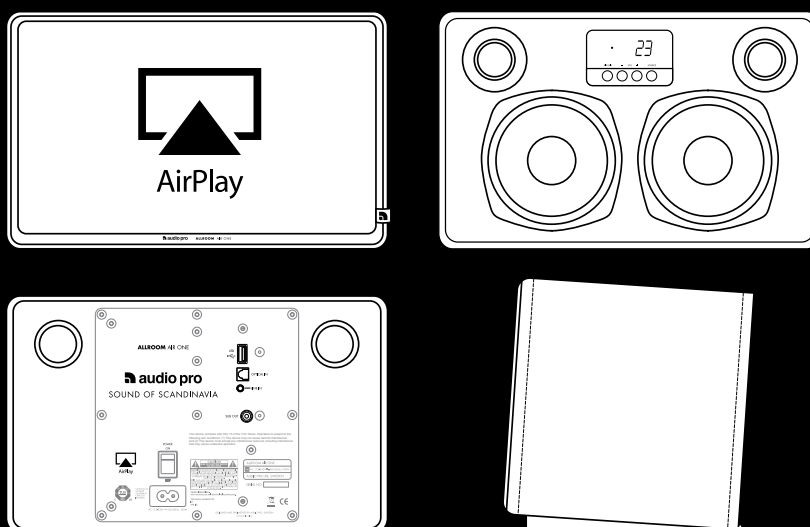
### Allroom Air One Wireless Connect page (192.168.1.1) will not load on my PC or Mac.

- Disable any additional firewall protection that is enabled through anti-virus software before starting to setup the Allroom Air One. After you have completed the setup re-enable the firewall protection.

### Allroom Air One is on and connected to your network, but will not play music from iTunes or your compatible iOS Device.

- In the "settings" application on your iOS device, turn Wi-Fi off then on again.
- Restart iTunes (PC or Mac), iPod app (iPhone) or Music app (iPod Touch).
- Make sure volume on Allroom Air One is not muted.
- Make sure you have downloaded the latest iTunes software (10.1 or later) and iOS Device software (iOS 4.2).
- Restart your wireless network: unplug your wireless router for at least 30 seconds, then re-plug in.
- Disable any additional firewall protection that is enabled through anti-virus software before starting to setup the Allroom Air One. After you have completed the setup re-enable the firewall protection.

# ALLROOM AIR ONE



 **audio pro**

SOUND OF SCANDINAVIA

[www.audiopro.com](http://www.audiopro.com) | [www.audiopro.se](http://www.audiopro.se)  
[www.facebook.com/audiopro](https://www.facebook.com/audiopro)